



One University. One World. Yours.

# Saint Mary's University Pension Plan

**Annual General Meeting**

June 2007

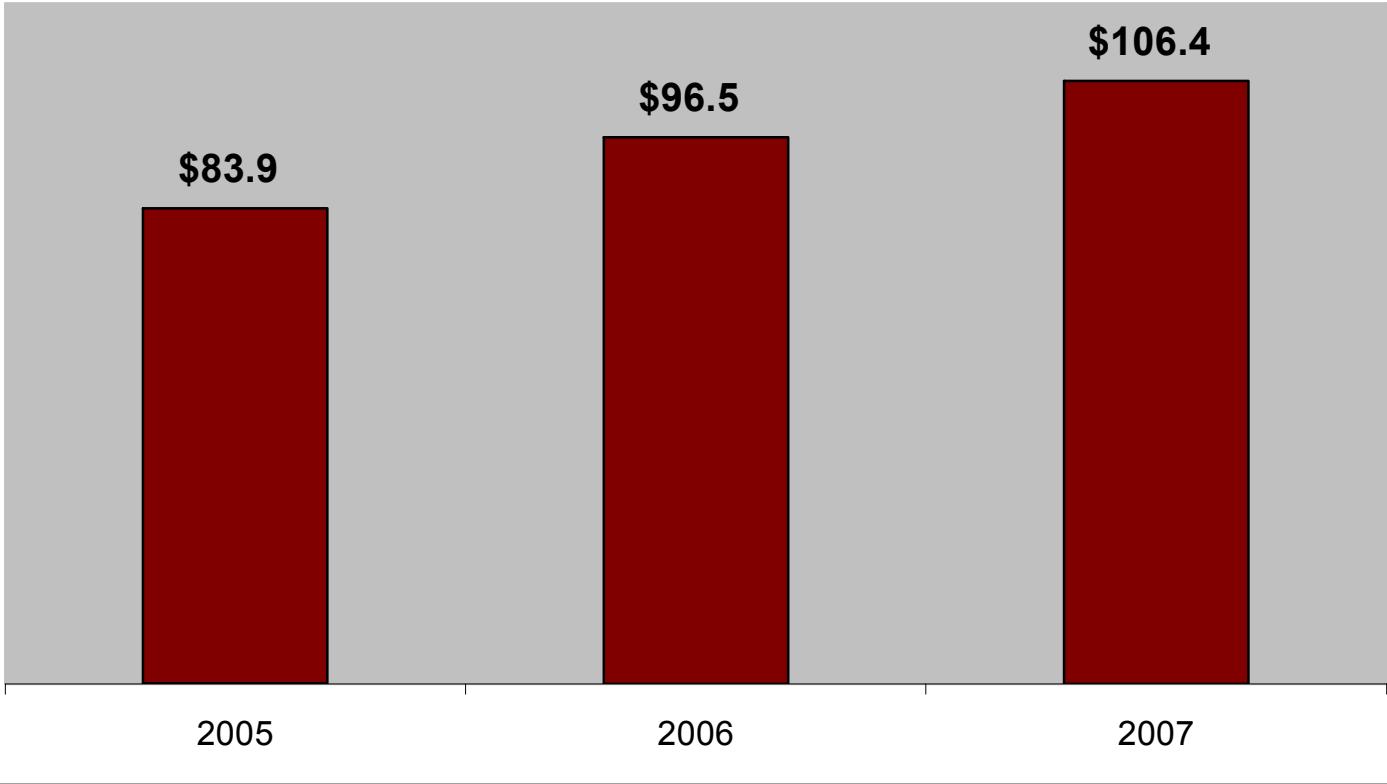
# Agenda

- ✓ **Governance Overview and Financial Report**
  - Chair, Pension Committee
  
- ✓ **Pension Plan Investments**
  - Mercer
  
- ✓ **Report from Custodian and Record keeper**
  - Sun Life Financial
  
- ✓ **Open Forum**
  - Member comments and questions
  
- ✓ **Members' Luncheon**

# Saint Mary's University

## Pension Assets (\$ millions) - March 31, 2007

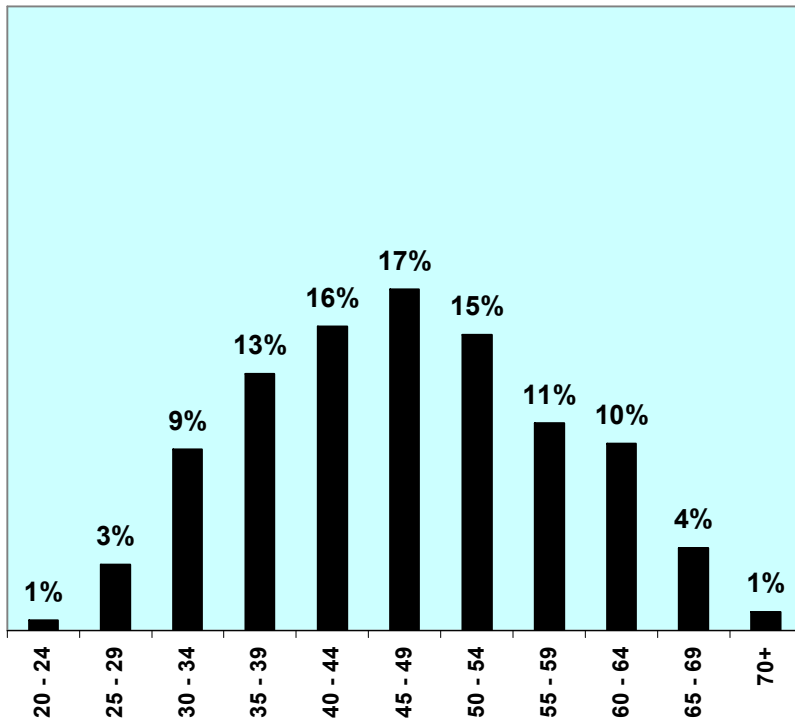
(839 members)



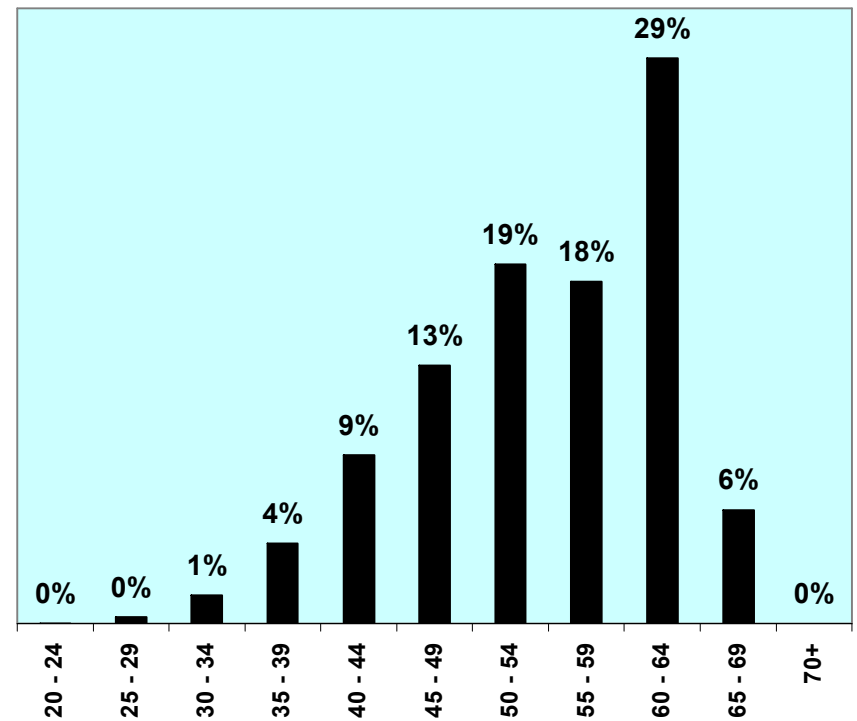
# Saint Mary's University

## Age Group Information - March 31, 2007

Number of members in age groups



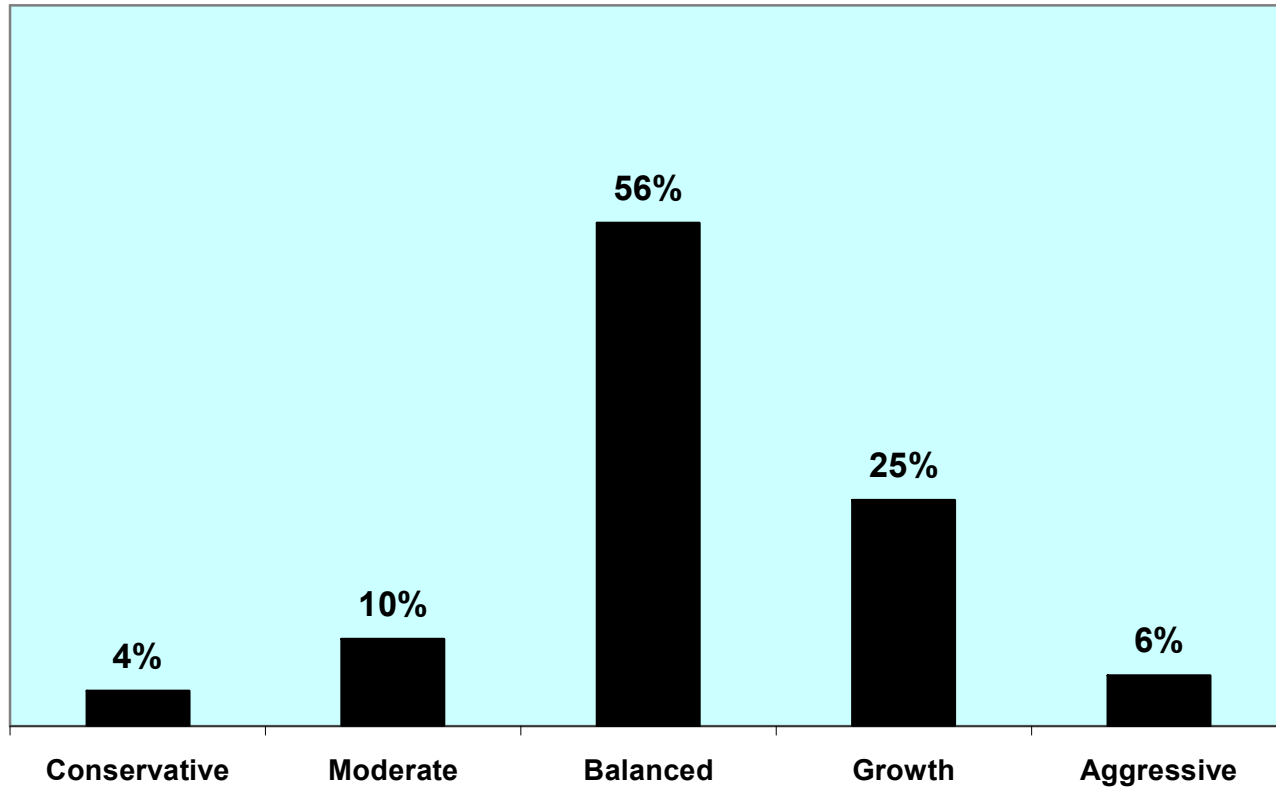
Amount of assets in age groups



The pension plan has a substantial portion (46%) of membership in mid-career (age 35 to 49). However, older plan members (age 50+) hold 72% of the plan assets.

# Saint Mary's University

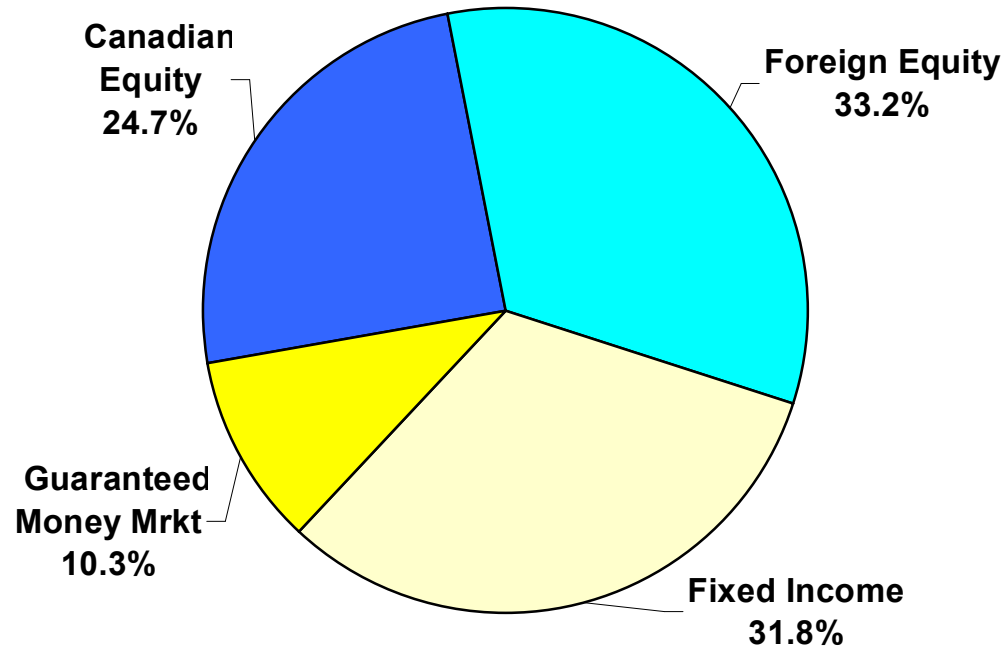
## Asset Allocation Portfolios - March 31, 2007



The above distribution show the proportion of members in the various asset allocation portfolios (80% of plan members at SMU use the portfolios)

## Saint Mary's University Pension Plan

### Investment Style Distribution - Asset Mix - March 31, 2007



The above charts show the proportion of pension assets in the various investment funds (100% of plan assets – includes the SMU portfolios and other investment choices)

## ***Pension Plan – financial / budget report***

**The pension committee has adequate funding to operate effectively:**

- Operating funding → \$65,000 annual budget provided by SMU
- 2006/07 expenses → \$59,300 (\$5,700 surplus)

(pension consulting, member meetings and training, investment monitoring, information return to pension superintendent, member communication)

- **Accumulated reserve for pension administration**

**→ increased from \$72,200 to \$81,200**

**(\$72,200 + \$5,700 surplus + \$3,300 interest)**

## Faculty & Administration Pension Committee

Pension Plan #1395-01: 476 members, \$84.3 million

### Saint Mary's University Faculty Union (5)

appointed by SMUFU

- Darryl Bruce (Psychology)
- Walt Finden (Mathematics)
- Lori Francis (Psychology)
- Jeff Power (Accounting)
- Nicola Young (Accounting)

### Administrative/Professional Group (1)

elected

- Kevin Webb (Manager, Financial Planning)

### University, ex officio (2)

VP Finance & Director of HR

- Larry Corrigan (Vice-President, Finance)
- Kim Squires (Director, Human Resources)

### Senior Administrator (1)

appointed by President

- Keith Hotchkiss (Director, Student Services)

### Committee Support Services (non-voting):

Committee Secretary - Janine Rose (Pension & Benefits Officer)  
Advisor, Internal - Ron Cochrane (Director of Finance)  
Advisor, Internal - Maureen Hayward (Manager, Treasury)  
Pension Consultant - Lori Park (Mercer HR Consulting)



## Support Staff Pension Committee

Pension Plan #1395-02: 363 members, \$22.1 million assets

### **Nova Scotia Government Employees Union (1)**

appointed by NSGEU  
- David Lane (Astronomy & Physics)

### **International Union of Operating Engineers (1)**

appointed by IUOE  
- Robert MacDonald and Sheldon Glick (Facilities Management)

### **University, ex officio (2)**

Vice-President, Finance & Director of HR  
- Larry Corrigan (Financial Services)  
- Kim Squires (Human Resources)

### **Senior Administrator (1)**

appointed by President  
- Keith Hotchkiss (Student Services)

Committee Support Services (non-voting):

Committee Secretary - Janine Rose (Pension & Benefits Officer)  
Advisor, Internal - Ron Cochrane (Director of Finance)  
Advisor, Internal - Maureen Hayward (Manager, Treasury)  
Pension Consultant - Lori Park (Mercer HR Consulting)

# Consolidated Pension Plan – June 1, 2007

